

Annual provisional suicide statistics for deaths reported to the Coroner between 1 July 2007 and 30 June 2019

Table 1: Provisional suicide deaths and rates per 100,000 population between July 2007 and June 2019

Year	2007/2008	2008/2009	2009/2010	2010/2011	2011/2012	2012/2013	2013/2014	2014/2015	2015/2016	2016/2017	2017/2018	2018/2019	Total
Total	540	531	541	558	547	541	529	564	579	606	668	685	6889
Per 100,000	12.20	12.04	12.26	12.65	12.34	12.10	11.73	12.27	12.33	12.64	13.67	13.93	-

Notes:

1. The per 100,000 population rates shown have been calculated using Stats NZ annual population estimates as at the end of each financial year.
2. Information about population estimates can be found at <https://www.stats.govt.nz/indicators/population-of-nz>

Table 2: Provisional suicide deaths by gender and rate per 100,000 population between July 2007 and June 2019

Year	Male (M)		Female (F)		Gender ratio (M:F)
	Number	Rate	Number	Rate	Ratio
2007/2008	405	19.35	135	6.20	3.00:1
2008/2009	394	18.61	137	6.23	2.87:1
2009/2010	401	18.70	140	6.29	2.85:1
2010/2011	419	19.36	139	6.20	3.01:1
2011/2012	405	18.58	142	6.30	2.85:1
2012/2013	388	17.63	153	6.76	2.54:1
2013/2014	385	17.50	144	6.26	2.67:1
2014/2015	428	18.96	136	5.81	3.14:1
2015/2016	409	17.71	170	7.13	2:41:1
2016/2017	457	19.36	149	6.12	3.06:1
2017/2018	475	19.72	193	7.79	2.46:1
2018/2019	498	20.58	187	7.49	2.66:1

Notes:

1. The per 100,000 population rates for the male and female groups have been calculated using the male and female populations respectively, as at the end of each financial year.
2. Male and female populations come from Stats NZ annual population estimates.
3. Information about population estimates can be found at <https://www.stats.govt.nz/indicators/population-of-nz>

Table 3: Provisional suicide deaths by age group and gender, and rates per 100,000 population, between July 2018 and June 2019

Age group (years)	Male		Female		Total	
	Number	Rate	Number	Rate	Number	Rate
10-14	5	3.02	6	3.83	11	3.41
15-19	48	29.69	25	16.26	73	23.14
20-24	64	36.37	27	16.60	91	26.87
25-29	57	31.57	18	10.05	75	20.85
30-34	43	26.30	20	11.54	63	18.71
35-39	36	23.81	9	5.63	45	14.46
40-44	32	22.48	14	9.18	46	15.60
45-49	42	26.93	17	10.03	59	18.12
50-54	46	30.51	17	10.46	63	20.11
55-59	34	22.30	20	12.20	54	17.07
60-64	29	21.53	4	2.77	33	11.82
65-69	16	13.71	5	4.03	21	8.72
70-74	20	20.27	3	2.85	23	11.27
75-79	9	13.33	1	1.32	10	6.99
80-84	6	14.47	0	0.00	6	6.49
85-89	4	17.10	1	3.05	5	8.90
90+	7	62.56	0	0.00	7	21.72
Total	498	20.58	187	7.49	685	13.93

Notes:

1. The per 100,000 population rates for the male and female age groups have been calculated using male and female age group populations respectively, as at the end of each financial year.
2. Male and female age group populations come from Stats NZ annual population estimates.
3. Information about population estimates can be found at <https://www.stats.govt.nz/indicators/population-of-nz>

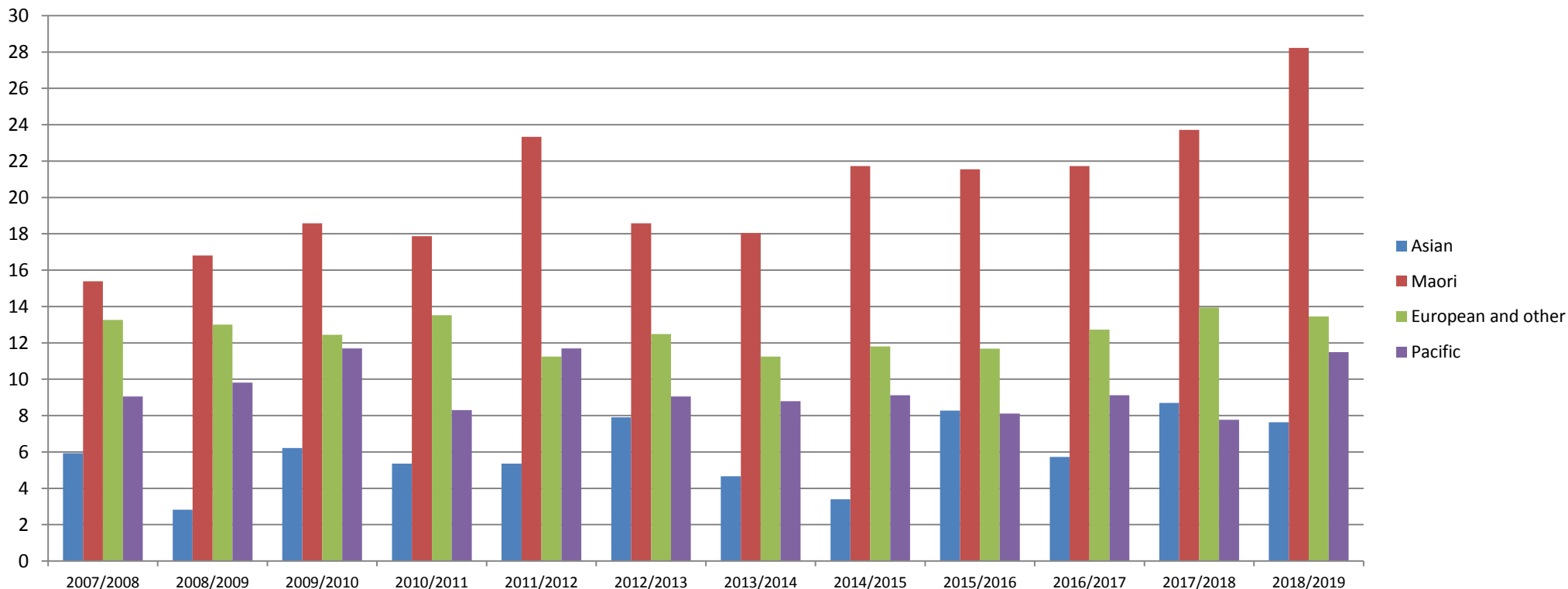
Table 4: Provisional suicide deaths by ethnicity between July 2007 and June 2019

Year	Asian		Māori		Pacific		European and other	
	Number	Rate	Number	Rate	Number	Rate	Number	Rate
2007/2008	21	5.93	87	15.39	24	9.05	408	13.26
2008/2009	10	2.82	95	16.81	26	9.81	400	13.00
2009/2010	22	6.21	105	18.58	31	11.69	383	12.45
2010/2011	19	5.36	101	17.87	22	8.30	416	13.52
2011/2012	19	5.36	132	23.34	31	11.69	365	11.24
2012/2013	28	7.90	105	18.58	24	9.05	384	12.48
2013/2014	22	4.66	108	18.04	26	8.79	373	11.25
2014/2015	16	3.39	130	21.72	27	9.12	391	11.80
2015/2016	39	8.27	129	21.55	24	8.12	387	11.68
2016/2017	27	5.72	130	21.72	27	9.12	422	12.73
2017/2018	41	8.69	142	23.72	23	7.77	462	13.94
2018/2019	36	7.63	169	28.23	34	11.49	446	13.46

Notes:

1. The per 100,000 population rates have been calculated using each ethnic group's population respectively.
2. Ethnic group populations come from the Stats NZ population information as published in the 2006 and 2013 censuses. At the time 2018/2019 rates were calculated, 2018 census data was not yet available.
3. 2006 and 2013 census information is available at <http://archive.stats.govt.nz/Census.aspx>
4. 'European and other' includes, but is not limited to: New Zealand European, European, Middle Eastern, Latin American, African and 'not elsewhere defined'.
5. The small population numbers for Pacific and Asian peoples means data may be more susceptible to fluctuation.

Figure 1: Provisional suicide rates by ethnicity per 100,000 population between July 2007 and June 2019



Notes:

1. The per 100,000 population rates have been calculated using each ethnic group's population respectively.
2. Ethnic group populations come from the Stats NZ population information as published in the 2006 and 2013 censuses. At the time 2018/2019 rates were calculated, 2018 census data was not yet available.
3. 2006 and 2013 census information is available at <http://archive.stats.govt.nz/Census.aspx>
4. 'European and other' includes, but is not limited to: New Zealand European, European, Middle Eastern, Latin American, African and 'not elsewhere defined'.
5. The small population numbers for Pacific and Asian peoples means data may be more susceptible to fluctuation.

Table 5: Provisional suicide deaths of Māori ethnicity by age group and gender between July 2007 and June 2019

Age group (years)	2007/2008		2008/2009		2009/2010		2010/2011		2011/2012		2012/2013		2013/2014		2014/2015		2015/2016		2016/2017		2017/2018		2018/2019		Total
	Male	Female	Male	Female	Male	Female	Male	Female	Male	Female	Male	Female	Male	Female	Male	Female	Male	Female	Male	Female	Male	Female	Male	Female	
10-14	2	2	4	3	1	1	3	4	5	4	1	1	1	2	3	3	1	1	1	7	3	3	3	4	63
15-19	12	4	10	14	10	8	21	7	25	12	16	8	7	11	13	10	13	11	11	4	15	9	16	12	279
20-24	11	2	10	4	11	5	12	5	13	6	15	13	22	5	13	6	14	8	15	9	19	7	27	11	263
25-29	9	2	4	4	13	2	11	2	15	3	10	3	12	5	18	5	16	5	13	8	15	6	17	6	204
30-34	10	3	10	1	8	1	6	3	7	6	9	4	8	6	13	3	12	6	10	5	11	4	14	6	166
35-39	4	7	6	0	11	2	3	2	5	2	6	1	7	2	10	4	7	5	13	3	11	4	6	2	123
40-44	5	3	6	2	10	2	7	1	10	2	7	0	5	2	13	4	3	3	7	1	11	1	5	8	118
45-49	2	1	2	1	7	0	5	2	5	1	2	0	5	2	4	0	4	3	6	5	7	3	5	3	75
50-54	4	0	3	1	2	1	5	1	3	2	3	2	1	3	3	2	4	1	4	0	2	3	6	4	60
55-59	3	0	3	1	3	3	0	0	4	0	3	1	0	0	1	0	3	2	3	1	1	2	4	3	41
60-64	1	0	3	0	2	1	1	0	1	0	0	0	1	0	2	0	3	1	1	0	0	1	2	2	22
65-69	0	0	1	0	0	0	0	0	0	0	0	0	0	0	0	0	0	0	1	1	0	1	1	0	5
70-74	0	0	2	0	1	0	0	0	1	0	0	0	0	0	0	0	1	0	0	0	0	0	2	0	7
75-79	0	0	0	0	0	0	0	0	0	0	0	0	1	0	0	0	2	0	0	0	0	1	0	0	4
80-84	0	0	0	0	0	0	0	0	0	0	0	0	0	0	0	0	0	0	0	0	1	0	0	0	1
85-89	0	0	0	0	0	0	0	0	0	0	0	0	0	0	0	0	0	0	1	0	0	0	0	0	1
90+	0	0	0	0	0	0	0	0	0	0	0	0	0	0	0	0	0	0	0	0	1	0	0	0	1
Total	63	24	64	31	79	26	74	27	94	38	72	33	70	38	93	37	83	46	86	44	97	45	108	61	1433

Figure 2: Provisional suicide deaths by month and national trendline between July 2007 and June 2019

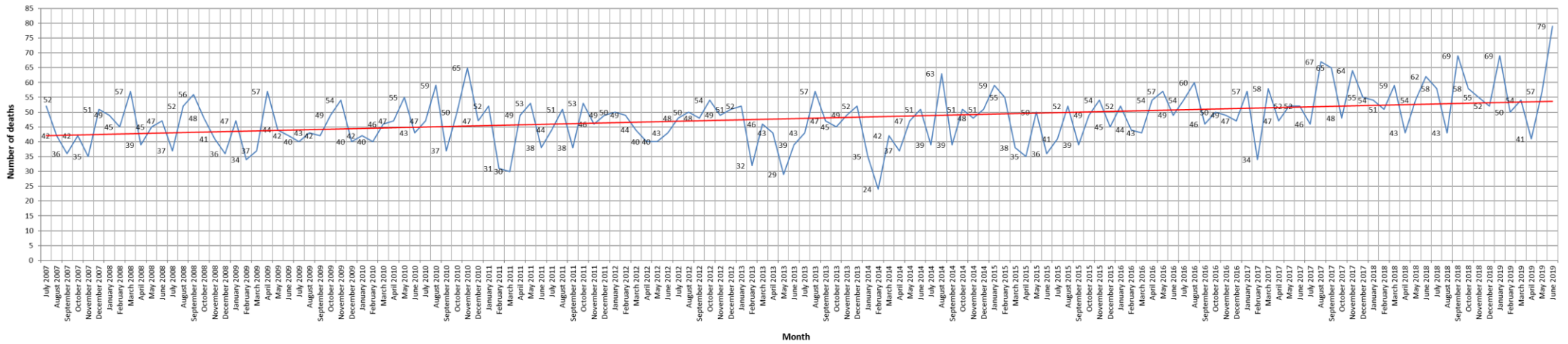


Table 6: Provisional suicide deaths by employment status between July 2007 and June 2019

Employment status	2007/2008	2008/2009	2009/2010	2010/2011	2011/2012	2012/2013	2013/2014	2014/2015	2015/2016	2016/2017	2017/2018	2018/2019	Total
Child not at school	0	0	1	0	0	0	1	1	0	0	1	1	5
Employed	232	207	208	200	195	211	222	246	252	262	308	307	2850
Home duties	9	13	13	7	7	2	13	6	11	9	6	10	106
Other	29	17	11	21	8	4	10	4	10	33	33	25	205
Prisoner	4	3	5	9	2	4	3	6	11	1	7	1	56
Retired/ Pensioner	56	56	54	53	53	49	67	70	70	64	78	69	739
Still enquiring	0	1	6	13	24	10	7	7	13	8	4	9	102
Student	37	51	42	50	53	54	48	47	55	54	63	71	625
Unavailable	2	6	4	4	2	0	0	0	2	3	2	2	27
Unemployed	140	138	163	157	155	156	147	169	146	167	161	185	1884
Unlikely to be known	31	39	34	44	48	51	11	8	9	5	5	5	290
Total	540	531	541	558	547	541	529	564	579	606	668	685	6889

Table 7: Provisional suicide deaths by District Health Board (DHB) region between July 2007 and June 2019

DHB region	2007/2008	2008/2009	2009/2010	2010/2011	2011/2012	2012/2013	2013/2014	2014/2015	2015/2016	2016/2017	2017/2018	2018/2019	Total
Auckland	53	53	39	51	42	46	41	48	50	43	73	54	593
Bay of Plenty	20	41	21	36	31	31	27	32	35	41	30	36	381
Canterbury	61	61	74	63	73	60	68	61	78	79	87	74	839
Capital & Coast	32	24	26	25	28	34	30	30	36	30	40	41	376
Counties Manukau	59	38	52	46	55	50	48	47	48	44	56	49	592
Hawkes Bay	16	23	23	25	27	18	28	29	26	27	29	38	309
Hutt	25	9	20	22	12	14	25	16	17	19	13	12	204
Lakes	12	20	21	23	18	15	15	10	21	17	9	23	204
MidCentral	27	25	22	24	32	18	41	27	22	35	32	37	342
Nelson Marlborough	16	17	13	12	24	17	13	18	24	17	12	20	203
Northland	19	15	16	20	24	29	21	28	21	36	41	33	303
South Canterbury	10	4	7	8	17	8	2	8	5	7	5	9	90
Southern	37	49	60	45	42	47	31	42	43	52	65	57	570
Tairāwhiti	14	8	6	8	3	5	2	13	8	6	14	10	97
Taranaki	17	17	18	20	12	17	14	19	11	16	11	14	186
Waikato	38	47	47	51	33	45	44	49	55	50	59	63	581
Wairarapa	6	5	11	5	7	10	8	9	6	12	8	8	95
Waitemata	62	56	51	55	50	62	52	63	49	52	64	87	703
West Coast	7	6	3	5	4	6	8	7	10	10	8	2	76
Whanganui	8	12	10	12	12	7	11	8	13	12	12	16	133
Off shore	1	1	1	2	1	2	0	0	1	1	0	2	12
Total	540	531	541	558	547	541	529	564	579	606	668	685	6889

Note: DHBs have varying population sizes. Each DHB's numbers should be read in the context of its population.