

Table 1. Provisional Suicide deaths and rates per 100,000 population between July 2007 and June 2016

Year	2007/2008	2008/2009	2009/2010	2010/2011	2011/2012	2012/2013	2013/2014	2014/2015	2015/2016	Total
Total	540	531	541	558	547	541	529	564	579	4930
Per 100,000	12.20	12.04	12.26	12.65	12.34	12.10	11.73	12.27	12.33	

Note: The per 100,000 population rate shown has been calculated following Statistics New Zealand annual population estimates.

Table 2. Male and Female provisional suicide deaths and rates per 100,000 population between July 2007 and June 2016 (n=4930)

Year	Males		Females		Gender Rate Ratio (M:F)
	Number	Rate	Number	Rate	Rate
2007/2008	405	19.35	135	6.20	3.00:1
2008/2009	394	18.61	137	6.23	2.87:1
2009/2010	401	18.70	140	6.29	2.85:1
2010/2011	419	19.36	139	6.20	3.01:1
2011/2012	405	18.58	142	6.30	2.85:1
2012/2013	388	17.63	153	6.76	2.54:1
2013/2014	385	17.50	144	6.26	2.67:1
2014/2015	428	18.96	136	5.81	3.14:1
2015/2016	409	17.71	170	7.13	2:41:1

Note: The per 100,000 population rate shown has been calculated following Statistics New Zealand annual population estimates.

Table 3. Provisional Suicide deaths reported to the Coroner by age and gender between July 2015 and June 2016 (n=579)

Age Group (years)	Males		Females		Total	
	Number	Rate	Number	Rate	Number	Rate
10-14	5	3.32	3	2.09	8	2.72
15-19	34	20.75	17	11.00	51	16.02
20-24	40	21.96	20	12.00	60	17.20
25-29	54	31.80	12	7.13	66	19.51
30-34	35	24.17	13	8.43	48	16.06
35-39	30	22.41	17	11.71	47	16.84
40-44	32	22.23	20	12.69	52	17.25
45-49	38	25.00	19	11.42	57	17.90
50-54	37	24.15	11	6.72	48	15.15
55-59	30	20.94	11	7.20	41	13.85
60-64	27	21.66	9	6.80	36	14.01
65-69	16	14.03	6	5.03	22	9.43
70-74	8	9.77	4	4.54	12	7.06
75-79	10	16.70	6	8.81	16	12.50
80-84	8	21.24	1	2.15	9	10.70
85 +	5	15.97	1	1.93	6	7.23
Total	409	17.71	170	7.13	579	12.33

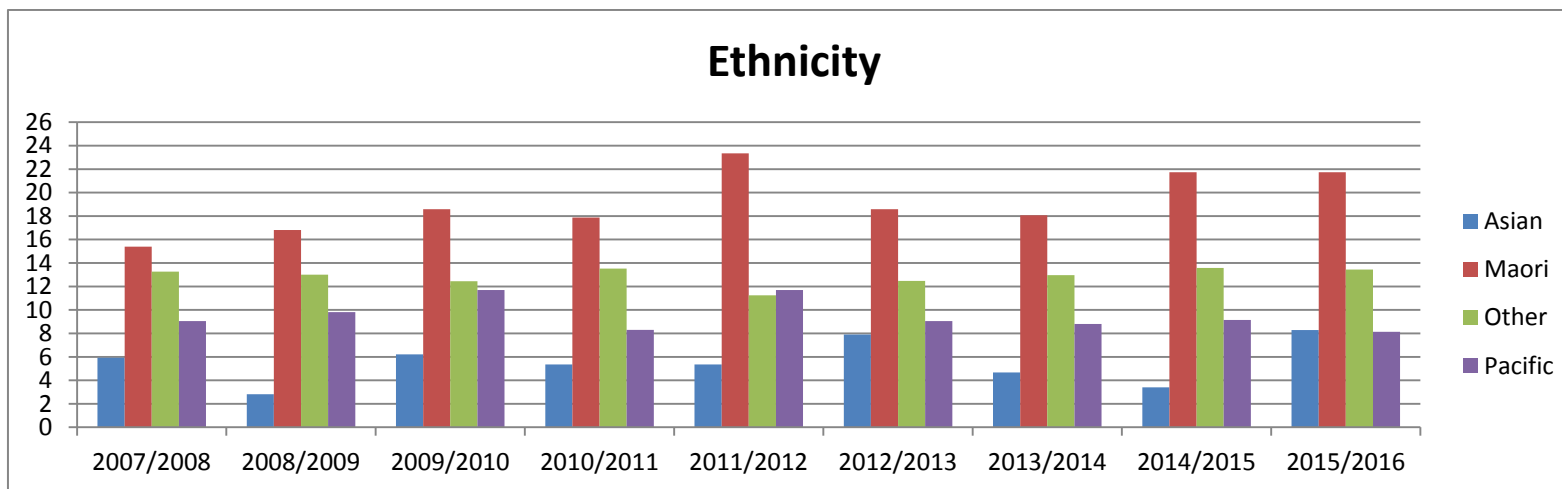
Note: The per 100,000 population rate shown has been calculated following Statistics New Zealand annual population estimates for the 2016 year.

Table 4. Provisional Suicide deaths reported to the Coroner by ethnicity between July 2007 and June 2016 (n=4930)

Year	Asian		Māori		Pacific		Other	
	Number	Rate	Number	Rate	Number	Rate	Number	Rate
2007/2008	21	5.93	87	15.39	24	9.05	408	13.26
2008/2009	10	2.82	95	16.81	26	9.81	400	13.00
2009/2010	22	6.21	105	18.58	31	11.69	383	12.45
2010/2011	19	5.36	101	17.87	22	8.30	416	13.52
2011/2012	19	5.36	132	23.34	31	11.69	365	11.24
2012/2013	28	7.90	105	18.58	24	9.05	384	12.48
2013/2014	22	4.67	108	18.06	26	8.81	373	12.96
2014/2015	16	3.40	130	21.74	27	9.15	391	13.58
2015/2016	39	8.28	129	21.57	24	8.13	387	13.44

Note: The per 100,000 population rate shown has been calculated using Statistics New Zealand annual population information as published following the 2006 and 2013 censuses. Table 4 shows provisional suicide deaths by ethnicity between July 2007 and June 2016. The small numbers and volatile nature of this data for Pacific and Asian peoples makes reliable estimation of the patterns very difficult and may be misleading.

Figure 1. Provisional Suicide rates by ethnicity per 100,000 population between July 2007 and June 2016 (n=4930)



Note: The per 100,000 population rate shown has been calculated using Statistics New Zealand annual population information as published following the 2006 and 2013 censuses. Ethnic groups have been classified in the following groups: Māori, Pacific peoples, Asian, Other (including European, Not Elsewhere classified and New Zealand European). The small numbers and volatile nature of this data for Pacific and Asian peoples makes reliable estimation of the patterns very difficult and may be misleading.

Table 5. Provisional Suicide deaths reported to the Coroner by Maori ethnicity between July 2007 and June 2016

Age Group (years)	2007/2008		2008/2009		2009/2010		2010/2011		2011/2012		2012/2013		2013/2014		2014/2015		2015/2016		Total
	Male	Female	Male	Female	Male	Female	Male	Female	Male	Female	Male	Female	Male	Female	Male	Female	Male	Female	
10-14	2	2	4	3	1	1	3	4	5	4	1	1	1	2	3	3	1	1	42
15-19	12	4	10	14	10	8	21	7	25	12	16	8	7	11	13	10	13	11	212
20-24	11	2	10	4	11	5	12	5	13	6	15	13	22	5	13	6	14	8	175
25-29	9	2	4	4	13	2	11	2	15	3	10	3	12	5	18	5	16	5	139
30-34	10	3	10	1	8	1	6	3	7	6	9	4	8	6	13	3	12	6	116
35-39	4	7	6		11	2	3	2	5	2	6	1	7	2	10	4	7	5	84
40-44	5	3	6	2	10	2	7	1	10	2	7		5	2	13	4	3	3	85
45-49	2	1	2	1	7		5	2	5	1	2		5	2	4		4	3	46
50-54	4		3	1	2	1	5	1	3	2	3	2	1	3	3	2	4	1	41
55-59	3		3	1	3	3			4		3	1			1		3	2	27
60-64	1		3		2	1	1		1				1		2		3	1	16
65-69			1																1
70-74			2		1				1								1		5
75-79													1				2		3
Total	63	24	64	31	79	26	74	27	94	38	72	33	70	38	93	37	83	46	992

Table 6. Provisional Suicide deaths reported to the Coroner by method between July 2007 and June 2016 (n=4930)

Method Type	2007/2008	2008/2009	2009/2010	2010/2011	2011/2012	2012/2013	2013/2014	2014/2015	2015/2016	Total
Cutting & piercing instrument	10	15	9	4	11	14	12	9	12	96
Fire	4	10	3	10	3	10	7	6	6	59
Firearms & explosives	45	50	50	38	44	40	52	49	30	398
Hanging, strangulation & suffocation	295	277	321	306	333	312	300	352	338	2834
Jumping from high place	11	17	19	12	16	24	11	19	28	157
Other poisoning (overdose/self-poisoning)	72	82	66	96	54	73	73	65	82	663
Other Type			1	2	1				2	6
Poisoning by gases & vapours	83	56	56	61	54	41	53	42	47	493
Submersion (drowning)	11	9	10	17	11	12	11	11	9	101
Transport	9	15	6	12	20	15	10	11	25	123
Total	540	531	541	558	547	541	529	564	579	4930

Figure 2. Provisional Suicide deaths by method used between July 2015 and June 2016 (n=579)

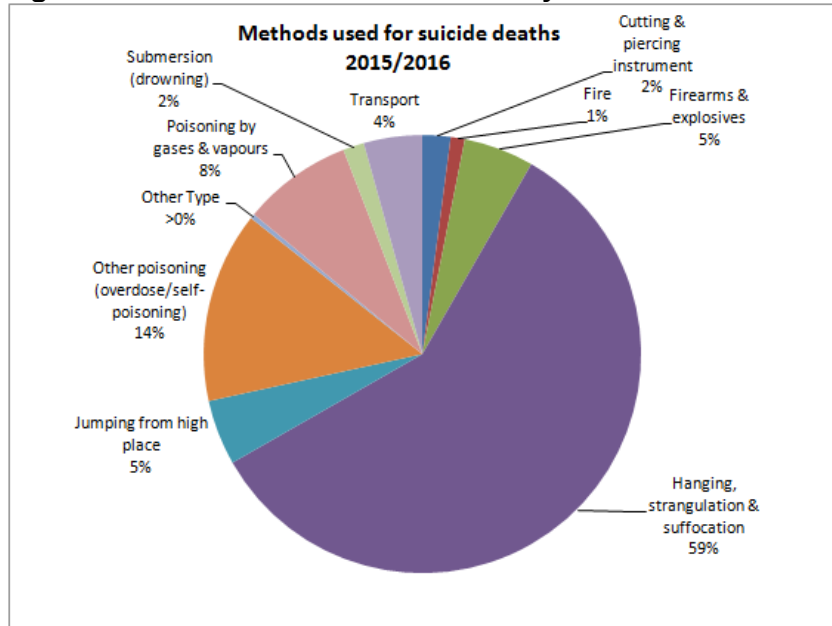
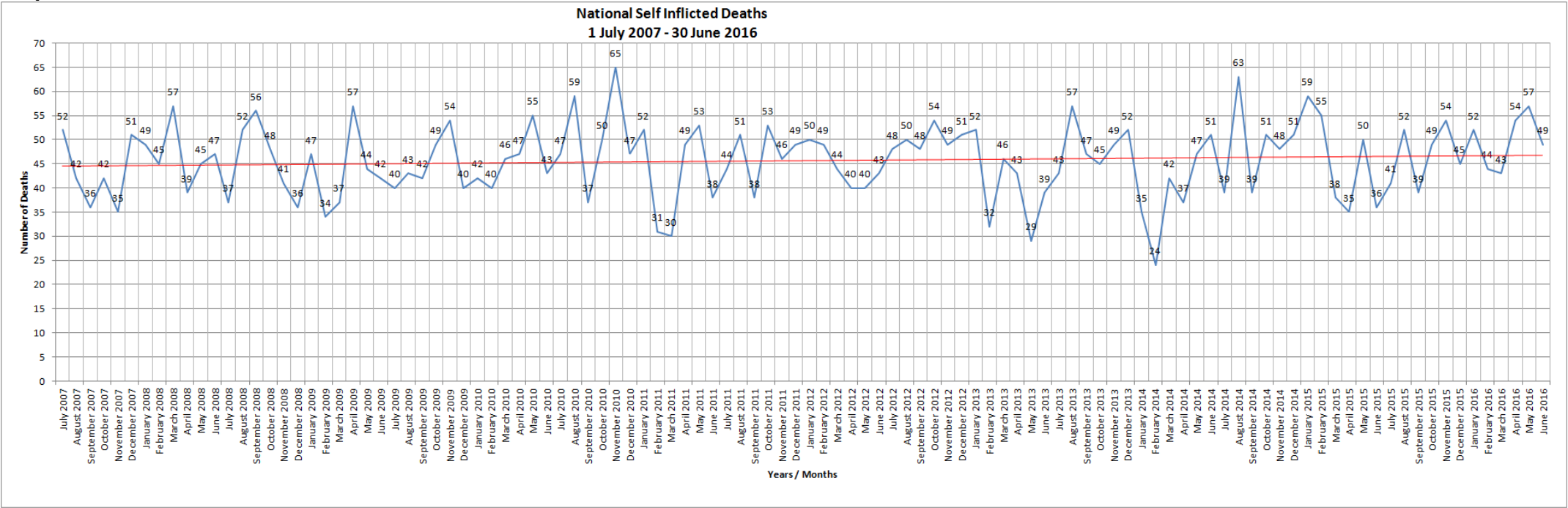


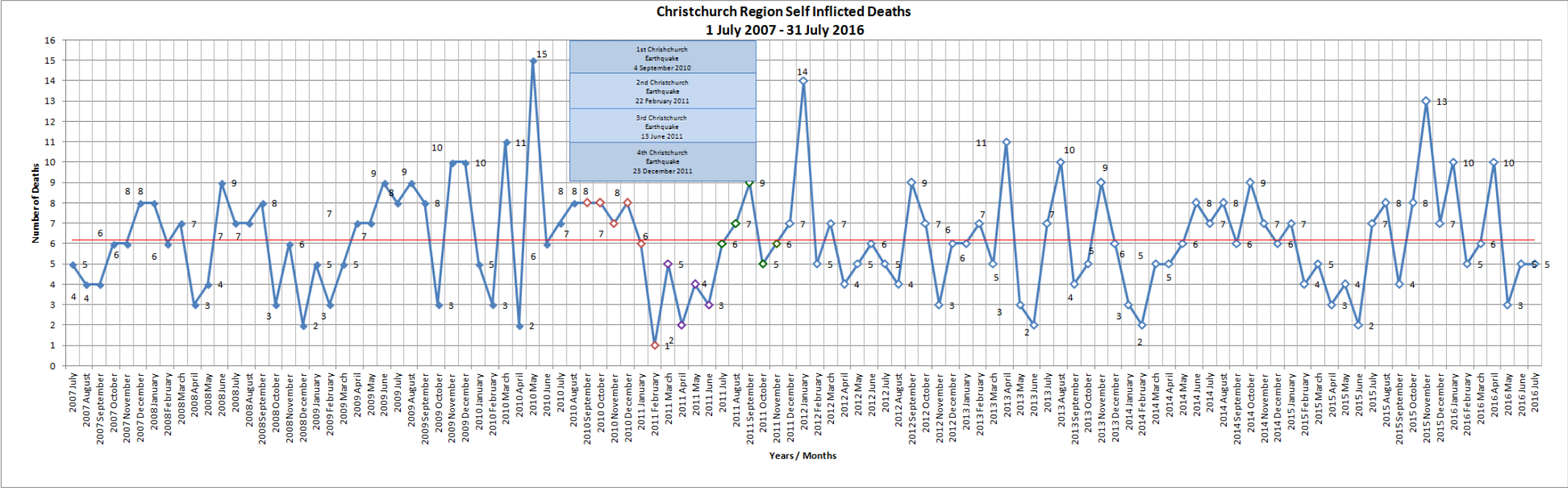
Table 7. Provisional Suicide deaths by DHB Region between July 2015 and June 2016

DHB Region	2007/2008	2008/2009	2009/2010	2010/2011	2011/2012	2012/2013	2013/2014	2014/2015	2015/2016	Total
Auckland	53	53	39	51	42	46	41	48	50	423
Bay of Plenty	20	41	21	36	31	31	27	32	35	274
Canterbury	61	61	74	63	73	60	68	61	78	599
Capital and Coast	32	24	26	25	28	34	30	30	36	265
Counties Manukau	59	38	52	46	55	50	48	47	48	443
Hawke's Bay	16	23	23	25	27	18	28	29	26	215
Hutt	25	9	20	22	12	14	25	16	17	160
Lakes	12	20	21	23	18	15	15	10	21	155
Mid Central	27	25	22	24	32	18	41	27	22	238
Nelson Marlborough	16	17	13	12	24	17	13	18	24	154
Northland	19	15	16	20	24	29	21	28	21	193
South Canterbury	10	4	7	8	17	8	2	8	5	69
Southern	37	49	60	45	42	47	31	42	43	396
Tairāwhiti	14	8	6	8	3	5	2	13	8	67
Taranaki	17	17	18	20	12	17	14	19	11	145
Waikato	38	47	47	51	33	45	44	49	55	409
Wairarapa	6	5	11	5	7	10	8	9	6	67
Waitemata	62	56	51	55	50	62	52	63	49	500
West Coast	7	6	3	5	4	6	8	7	10	56
Whanganui	8	12	10	12	12	7	11	8	13	93
Off Shore	1	1	1	2	1	2	0	0	1	9
Total	540	531	541	558	547	541	529	564	579	4930

Graph 1. National trendline



Graph 2. Provisional Suicide deaths in relation to the Christchurch earthquakes



Note: The Canterbury data shown covers the geographical areas for the Canterbury and South Canterbury District Health Boards.

Table 8. Provisional Suicide deaths by Christchurch Region between July 2007 and June 2016

Christchurch Region	2007/2008	2008/2009	2009/2010	2010/2011	2011/2012	2012/2013	2013/2014	2014/2015	2015/2016
July	5	7	8	7	6	5	7	7	7
August	4	7	9	8	7	4	10	8	8
September	4	8	8	8	9	9	4	6	4
October	6	3	3	8	5	7	5	9	8
November	6	6	10	7	6	3	9	7	13
December	8	2	10	8	7	6	6	6	7
January	8	5	5	6	14	6	3	7	10
February	6	3	3	1	5	7	2	4	5
March	7	5	11	5	7	5	5	5	6
April	3	7	2	2	4	11	5	3	10
May	4	7	15	4	5	3	6	4	3
June	9	9	6	3	6	2	7	2	5
Total	70	69	90	67	81	68	69	68	86

Note: The Canterbury data shown covers the geographical areas for the Canterbury and South Canterbury District Health Boards.

Table 9. Provisional Suicide deaths by Employment Status between July 2007 and June 2016

Employment Status	2007/2008	2008/2009	2009/2010	2010/2011	2011/2012	2012/2013	2013/2014	2014/2015	2015/2016	Total
Child not at school			1				1	1		3
Employed	232	207	208	200	195	211	222	246	252	1973
Home Duties	9	13	13	7	7	2	13	6	11	81
Other	29	17	11	21	8	4	10	4	10	114
Prisoner	4	3	5	9	2	4	3	6	11	47
Retired/Pensioner	56	56	54	53	53	49	67	70	70	528
Still Enquiring		1	6	13	24	10	7	7	13	81
Student	37	51	42	50	53	54	48	47	55	437
Unavailable	2	6	4	4	2				2	20
Unemployed	140	138	163	157	155	156	147	169	146	1371
Unlikely to be known	31	39	34	44	48	51	11	8	9	275
Total	540	531	541	558	547	541	529	564	579	4930

Technical Notes

Data Sources

All provisional suicide data in this report was extracted from the Ministry of Justice's Coronial Database held within the Case Management System (CMS). The data used for the 2015/2016 information was extract from CMS on 19 August 2016.

The population rates used in the report for calculating per 100,000 rates were from Statistics New Zealand population data that applied at the time when this data was extracted.

Small Numbers

The small numbers and volatile nature of data for Pacific and Asian peoples makes reliable estimation of the patterns very difficult and may be misleading.

Classification of a suicide death

In New Zealand, a death is only officially classified as a suicide by the coroner on completion of the coroner's inquiry. In some cases, an inquest may be heard several years after the death, particularly if there are factors relating to the death that need to be investigated first (for example, a death in custody).

In order to make a determination that a deceased person has died by suicide, a high threshold of evidence is required for a Coroner to be satisfied that the deceased person acted deliberately and intentionally for the purpose of ending his or her life. The Coroner bases this decision on the available evidence presented to him or her.

Provisional nature of the data

The number of suicide deaths in this report may differ from the number released by the Ministry of Health. This data includes all deaths initially identified to the coroner as self-inflicted. However, only those determined as 'intentionally self-inflicted' after investigation will receive a final verdict of suicide. Some deaths provisionally coded as suicide may later be determined not to be suicide.

Auditor General Report on Suicide

The recent report on suicide released by the Auditor General made a number of recommendations in relation to this annual release of statistics, see below

- Fuller technical notes;
- Referring to “suspected suicides” instead of “provisional suicides”;
- Grouping data on methods into the same groups as are used by the Ministry of Health; and
- Calculating suicide rates using the methods used by the Ministry of Health or Statistics New Zealand.

Fuller technical notes have now been provided.

To ensure it is clear that this is the release of “provisional” data it has been decided to retain the name of this report as the “Annual provisional suicide statistics”.

Ministry of Justice staff met with the Ministry of Health staff in an effort to ascertain what would be needed to align both methods and calculations of rates. It was deemed that the time available to make any alignments prior to this release were insufficient so no changes have been made to the way this data has been extracted for the 2015/2016 release. It is planned that Justice staff will work closely with Health staff to incorporate these changes in the release of this data in 2016/2017.